



**AccidentPlan**<sup>TM</sup>  
You're Road Ready

Advanced Crash Protocol with  
Rapid Response Technology



Skidmore

Meet Skidmore, AccidentPlan's training mascot and star of the seven-chapter training video on the six phases of crash protocol.

Now Skidmore is an excellent driver just like you, right?

But even the best driver can have a really bad day.

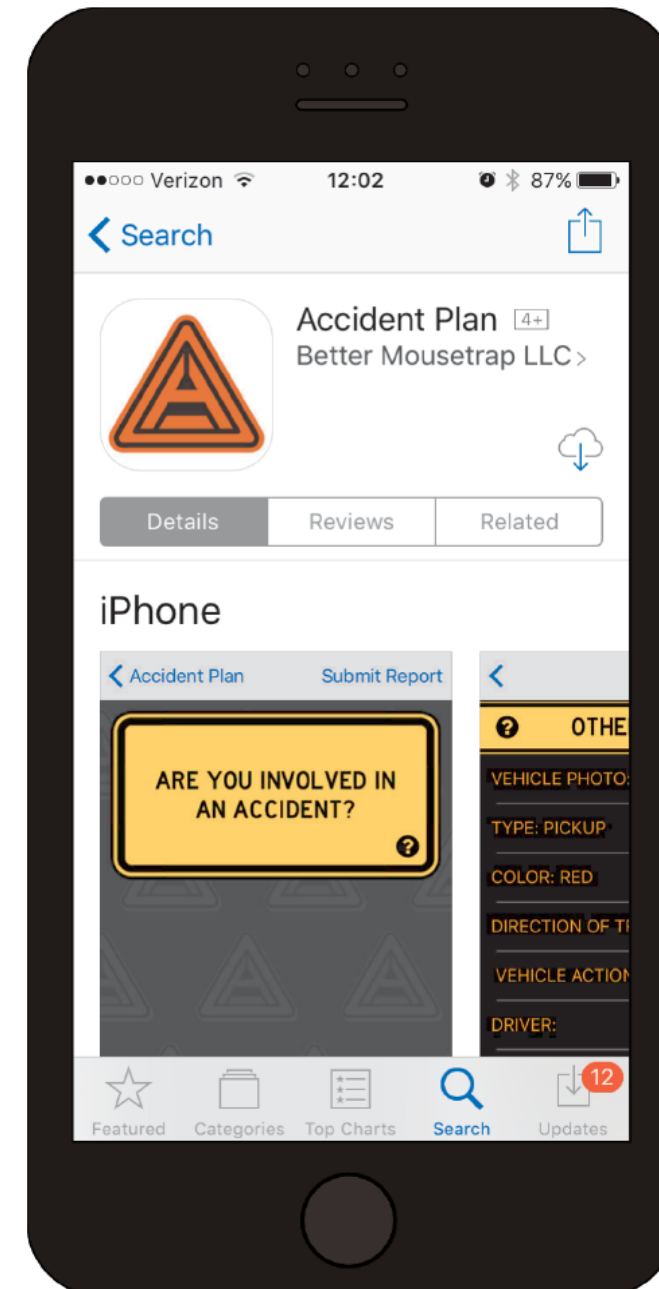
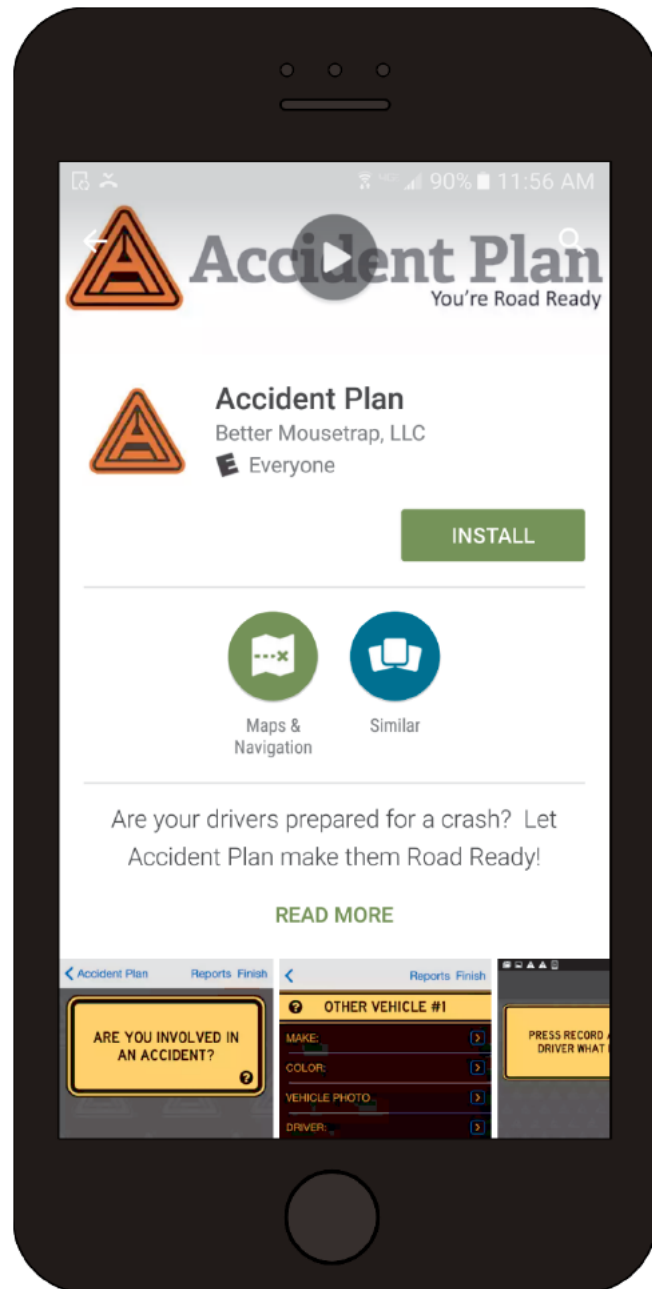




Truck crashes are a high stakes situation for everyone.

We are providing AccidentPlan so you have a tool and a protocol to use in the event that the “bad day” happens to you.



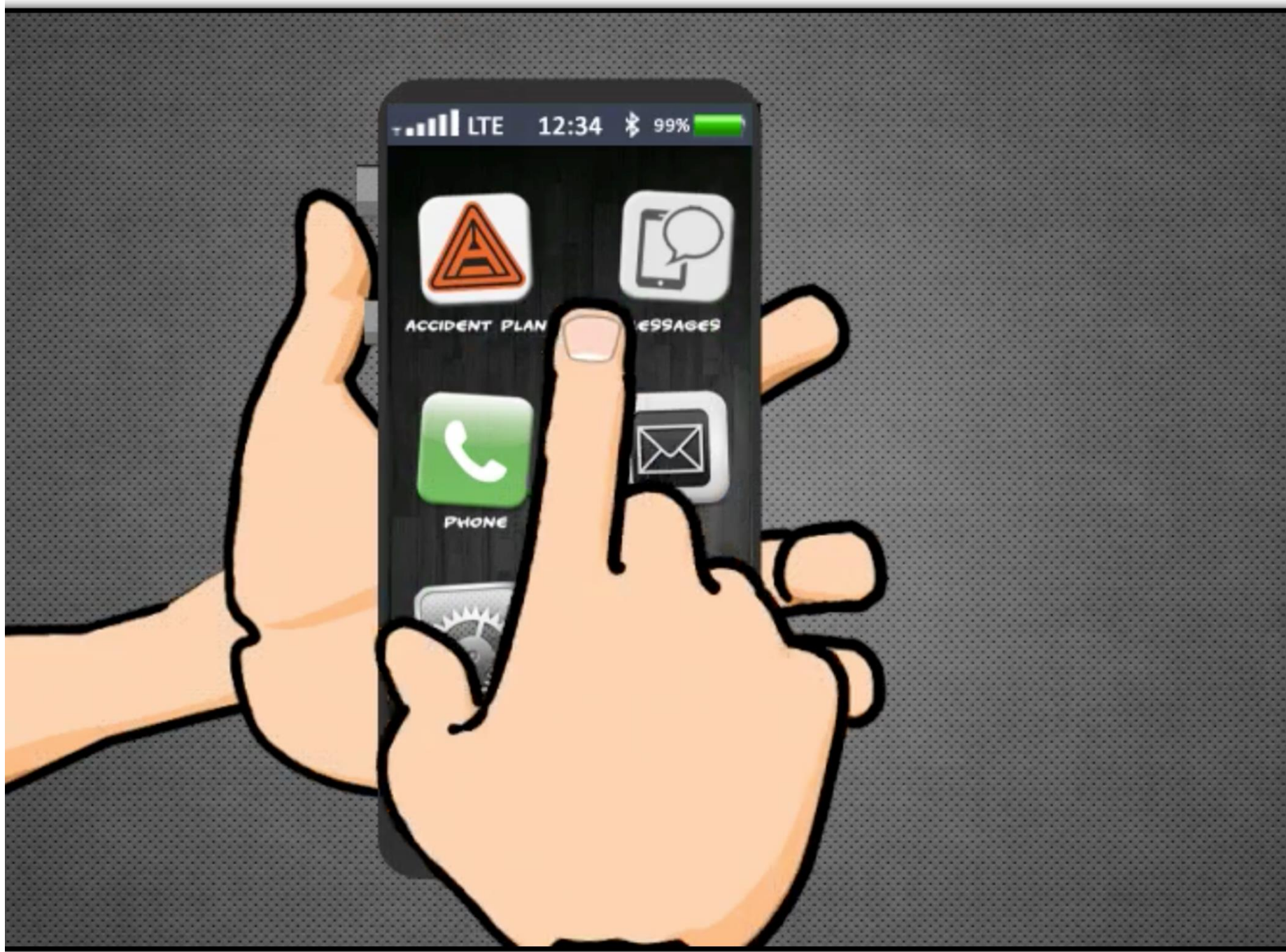


Let's get you set up. Go to your app store. Using your phone, search for AccidentPlan and look for the triangle.

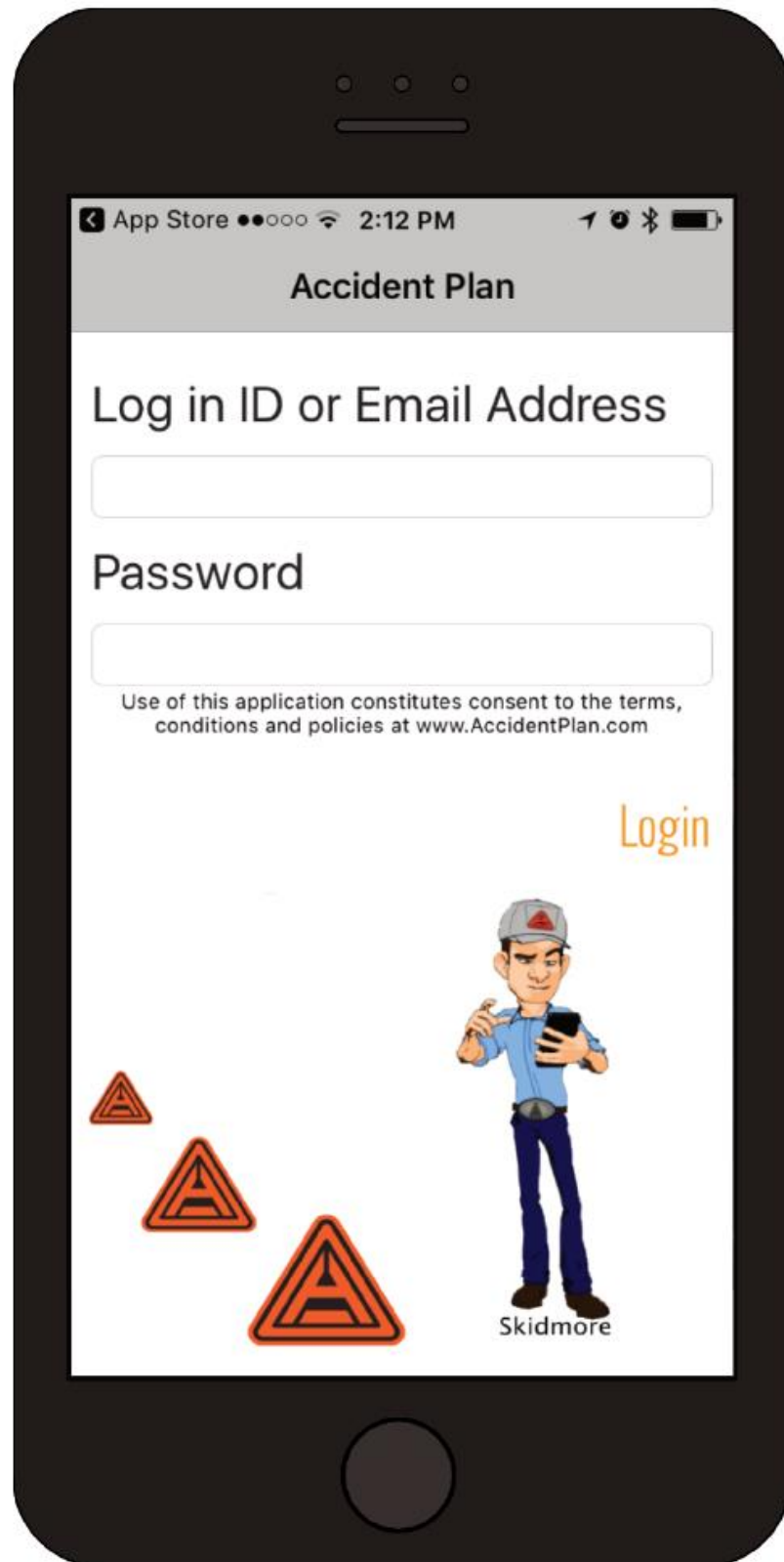




# Deploy AccidentPlan from Triangle Icon



# Log In



Use your User ID and Password.

Initial log in may take a few minutes to load.

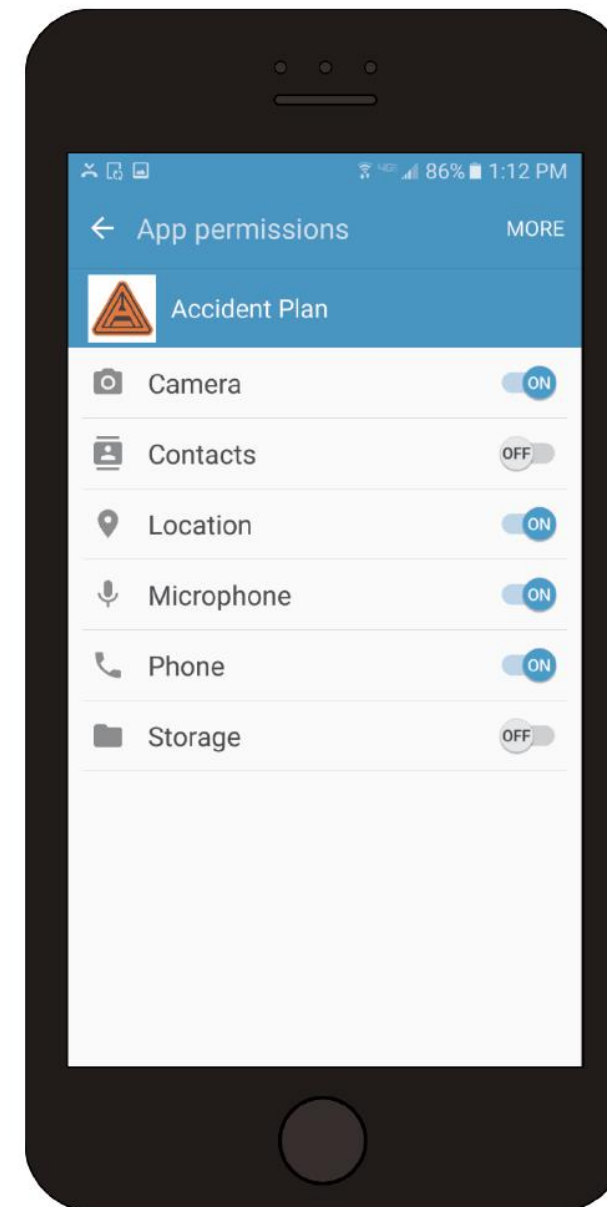
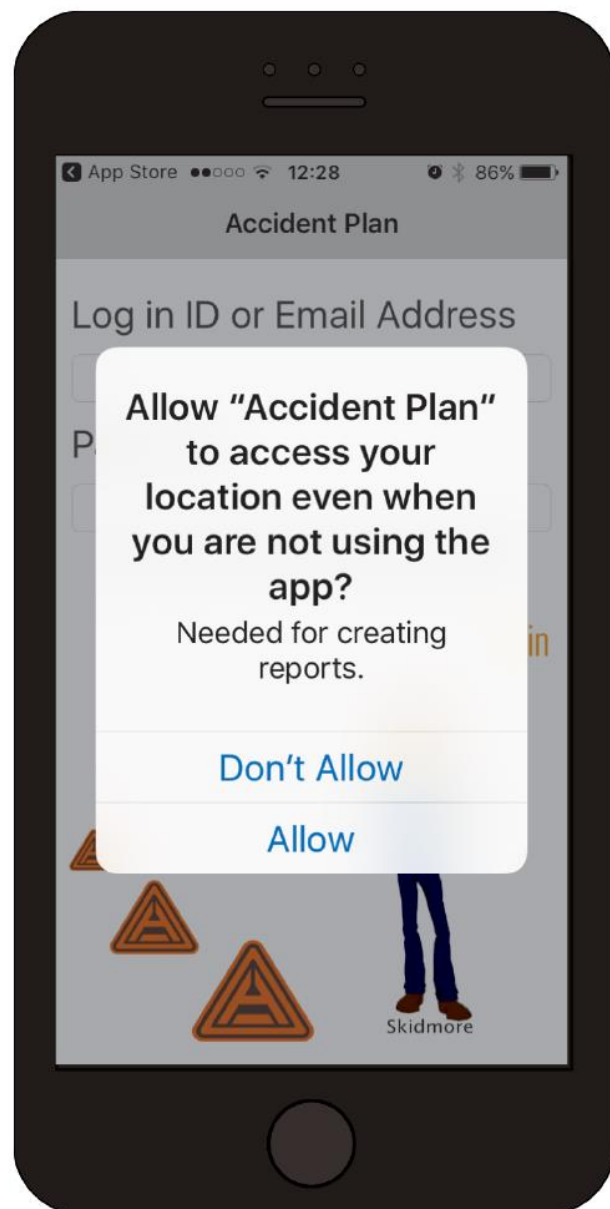


You should stay logged in automatically but make it part of your pre-trip safety inspection to open the app just to be sure.



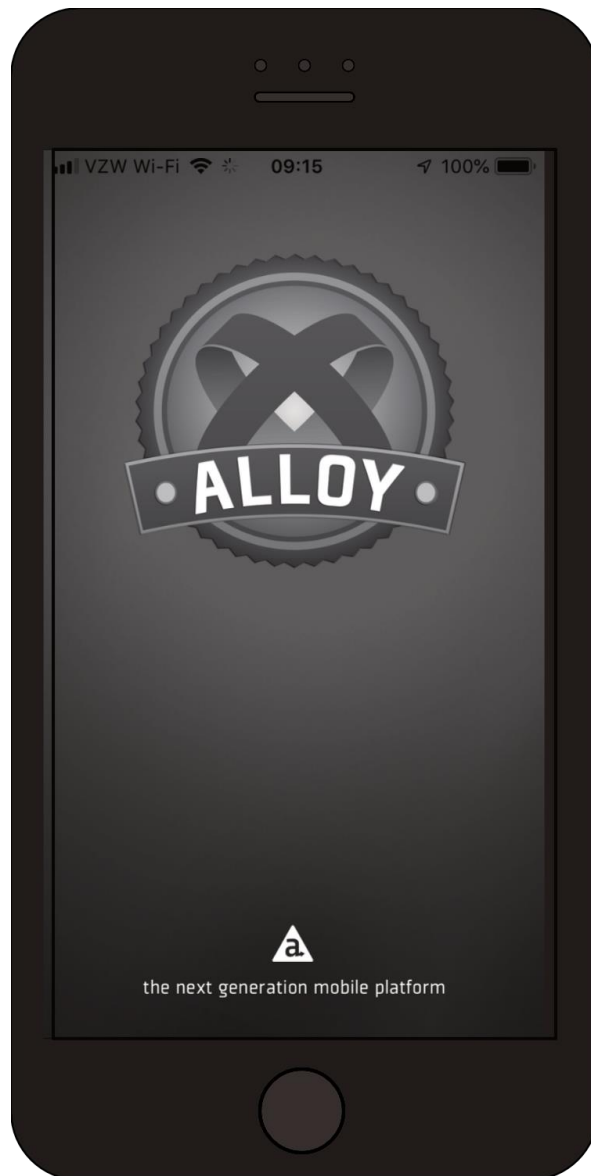
# Enable Permissions

To function properly, AccidentPlan needs access to your location, camera, microphone, telephone and storage. It does not run in the background -- only uses access when the app is deployed.

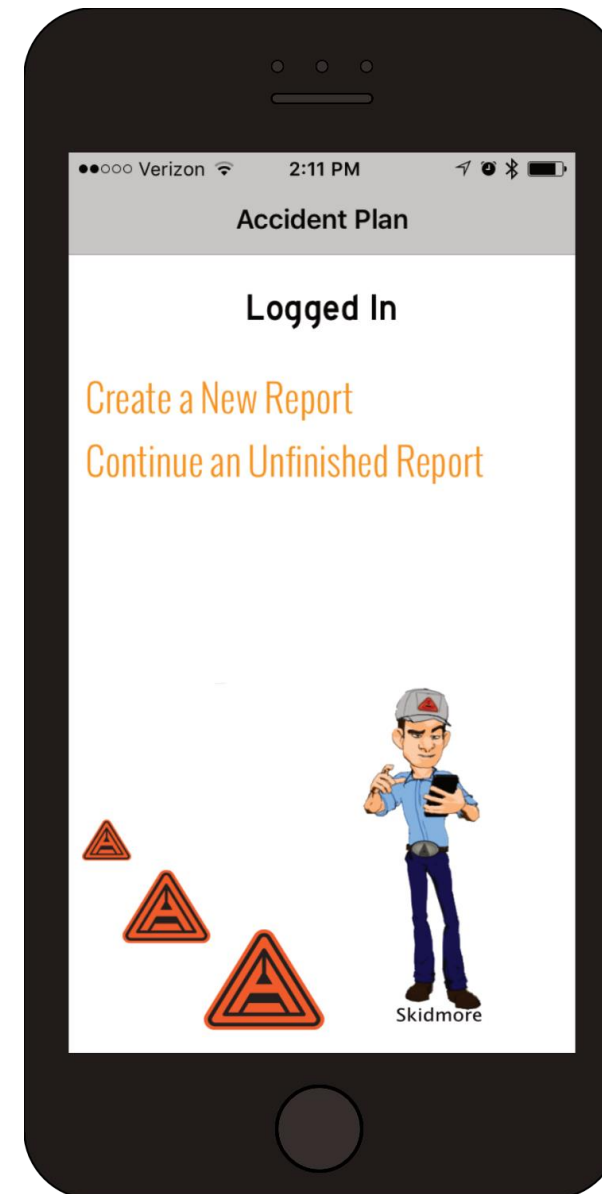


Some happen automatically. Some need to be enabled manually, especially on the Samsung Galaxy devices.





You may see this screen for a moment during the initialization process.



Your ready to create a report!







# Accident Plan

## PDF Report

Report Number: 4274

Submitted by: Power Unit 40

Company Name: M J Tanklines

Date: Nov 10, 2016

Time: 02:15

Location: Latitude: 33.9286 Longitude: -118.275

**WELCOME TO ACCIDENT PLAN. ARE YOU INVOLVED IN AN ACCIDENT?**

YES. I AM INVOLVED IN AN ACCIDENT!

**DON'T WORRY, WE'RE RIDING SHOTGUN. ACCIDENT PLAN WILL SEND NOTIFICATIONS AND START A REPORT. CONTINUE ONLY IN THE EVENT OF A REAL ACCIDENT.**

CONTINUE

**HAVE YOU ALREADY CALLED 911?**

Yes

**ARE YOU INJURED?**

No

**SECURE THE SCENE: ARE YOUR FLASHERS ON?**

Yes

**SECURE THE SCENE: IS YOUR ENGINE OFF?**

Yes

**SECURE THE SCENE: ARE YOUR TRIANGLES OUT?**

Yes

**REMAIN CALM.**

CONTINUE

**PREVENT FURTHER ACCIDENTS.**

CONTINUE

**DO NOT MOVE THE INJURED.**

CONTINUE

**ASSIST THOSE IN NEED TO THE BEST OF YOUR ABILITY.**

CONTINUE




When you push “Yes”, the safety team is notified via email and can log in and see this report happen in real-time.

Enabling locations pinpoints your exact location for dispatching assistance.

*The report you see here is an actual report used with express permission of our client MJ Tanklines who is a petroleum carrier operating in Southern California. We have redacted all personally identifying information because we take the privacy of our clients very seriously.*





## Accident Plan

### PDF Report

Report Number: 4274  
 Submitted by: Power Unit 40  
 Company Name: M J Tanklines  
 Date: Nov 10, 2016  
 Time: 02:15  
 Location: Latitude: 33.9286 Longitude: -118.275

WELCOME TO ACCIDENT PLAN. ARE YOU INVOLVED IN AN ACCIDENT?  
 YES. I AM INVOLVED IN AN ACCIDENT!  
 DON'T WORRY, WE'RE RIDING SHOTGUN. ACCIDENT PLAN WILL SEND NOTIFICATIONS AND START A REPORT. CONTINUE ONLY IN THE EVENT OF A REAL ACCIDENT.  
 CONTINUE

**HAVE YOU ALREADY CALLED 911?**  
 Yes

ARE YOU INJURED?  
 No

SECURE THE SCENE: ARE YOUR FLASHERS ON?  
 Yes

SECURE THE SCENE: IS YOUR ENGINE OFF?  
 Yes

SECURE THE SCENE: ARE YOUR TRIANGLES OUT?  
 Yes

REMAIN CALM.  
 CONTINUE

PREVENT FURTHER ACCIDENTS.  
 CONTINUE

DO NOT MOVE THE INJURED.  
 CONTINUE

ASSIST THOSE IN NEED TO THE BEST OF YOUR ABILITY.  
 CONTINUE

COOPERATE WITH AUTHORITIES, BUT DO NOT DISCUSS FAULT!  
 CONTINUE

WEAR YOUR SAFETY VEST.  
 CONTINUE

WATCH OUT FOR TRAFFIC AND STAY SAFE!  
 CONTINUE

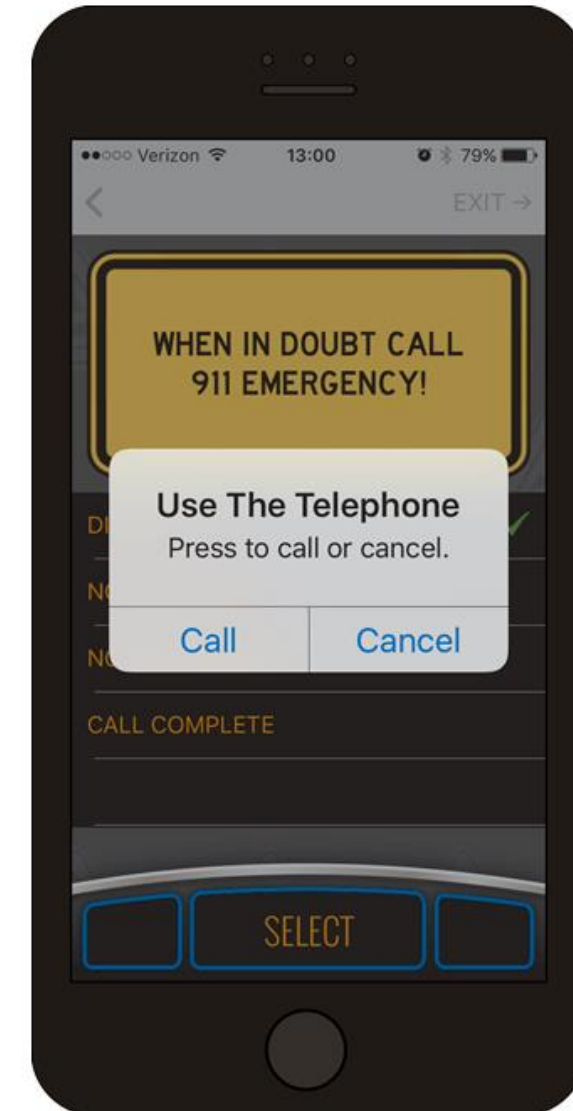
TIME TO START GATHERING THE FACTS.  
 CONTINUE

WHAT IS YOUR FIRST NAME?  
 Jimmy

WHAT IS YOUR LAST NAME?  
 [REDACTED]


TAKE MULTIPLE PHOTOS OF THE SCENE WHILE IT IS FRESH! USE THE CAMERA ICON BELOW.

The driver named above has called 911 indicating that an emergency situation is underway.



Call 911 without leaving the platform. When indicated, your supervisor will be notified via email.





## Accident Plan

### PDF Report

Report Number: 4274  
 Submitted by: Power Unit 40  
 Company Name: M J Tanklines  
 Date: Nov 10, 2016  
 Time: 02:15  
 Location: Latitude: 33.9286 Longitude: -118.275


WELCOME TO ACCIDENT PLAN. ARE YOU INVOLVED IN AN ACCIDENT?  
 YES. I AM INVOLVED IN AN ACCIDENT!  
 DON'T WORRY, WE'RE RIDING SHOTGUN. ACCIDENT PLAN WILL SEND NOTIFICATIONS AND START A REPORT. CONTINUE ONLY IN THE EVENT OF A REAL ACCIDENT.  
 CONTINUE  
 HAVE YOU ALREADY CALLED 911?  
 Yes  
 ARE YOU INJURED?  
 No  
 SECURE THE SCENE: ARE YOUR FLASHERS ON?  
 Yes  
 SECURE THE SCENE: IS YOUR ENGINE OFF?  
 Yes  
 SECURE THE SCENE: ARE YOUR TRIANGLES OUT?  
 Yes  
 REMAIN CALM.  
 CONTINUE  
 PREVENT FURTHER ACCIDENTS.  
 CONTINUE  
 DO NOT MOVE THE INJURED.  
 CONTINUE  
 ASSIST THOSE IN NEED TO THE BEST OF YOUR ABILITY.  
 CONTINUE  
 COOPERATE WITH AUTHORITIES, BUT DO NOT DISCUSS FAULT!  
 CONTINUE  
 WEAR YOUR SAFETY VEST.  
 CONTINUE  
 WATCH OUT FOR TRAFFIC AND STAY SAFE!  
 CONTINUE  
 TIME TO START GATHERING THE FACTS.  
 CONTINUE  
 WHAT IS YOUR FIRST NAME?  
 Jimmy  
 WHAT IS YOUR LAST NAME?  
 [REDACTED]

TAKE MULTIPLE PHOTOS OF THE SCENE WHILE IT IS FRESH! USE THE CAMERA ICON BELOW.



Your answers are noted, and the documentation can protect you in an investigation.





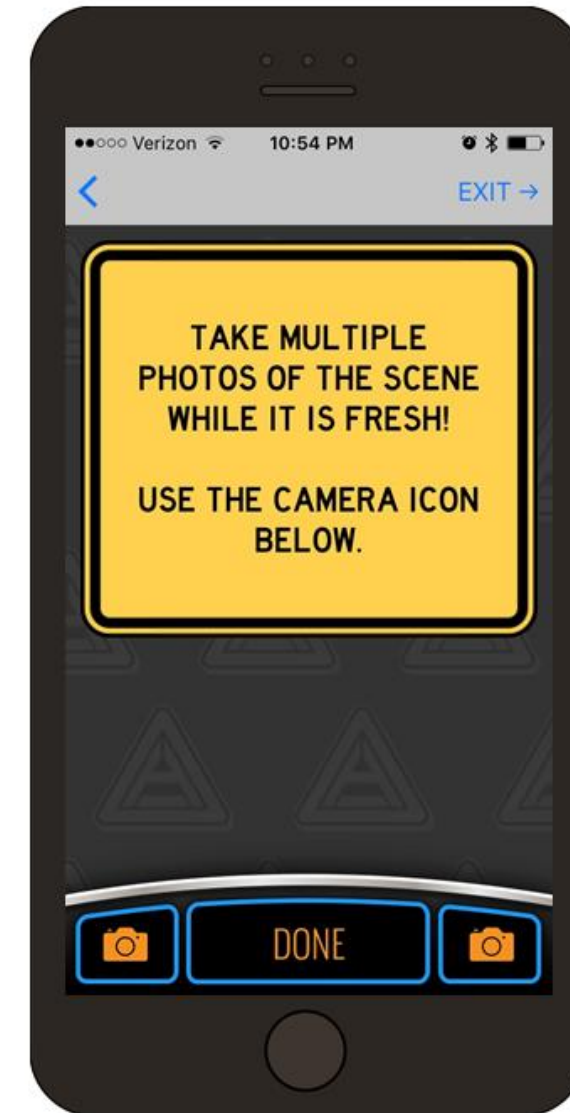
## Accident Plan

### PDF Report

Report Number: 4274  
 Submitted by: Power Unit 40  
 Company Name: M J Tanklines  
 Date: Nov 10, 2016  
 Time: 02:15  
 Location: Latitude: 33.9286 Longitude: -118.275

**WELCOME TO ACCIDENT PLAN. ARE YOU INVOLVED IN AN ACCIDENT?**  
 YES. I AM INVOLVED IN AN ACCIDENT!  
**DON'T WORRY, WE'RE RIDING SHOTGUN. ACCIDENT PLAN WILL SEND NOTIFICATIONS AND START A REPORT. CONTINUE ONLY IN THE EVENT OF A REAL ACCIDENT.**  
 CONTINUE  
**HAVE YOU ALREADY CALLED 911?**  
 Yes  
**ARE YOU INJURED?**  
 No  
**SECURE THE SCENE: ARE YOUR FLASHERS ON?**  
 Yes  
**SECURE THE SCENE: IS YOUR ENGINE OFF?**  
 Yes  
**SECURE THE SCENE: ARE YOUR TRIANGLES OUT?**  
 Yes  
**REMAIN CALM.**  
 CONTINUE  
**PREVENT FURTHER ACCIDENTS.**  
 CONTINUE  
**DO NOT MOVE THE INJURED.**  
 CONTINUE  
**ASSIST THOSE IN NEED TO THE BEST OF YOUR ABILITY.**  
 CONTINUE  
**COOPERATE WITH AUTHORITIES, BUT DO NOT DISCUSS FAULT!**  
 CONTINUE  
**WEAR YOUR SAFETY VEST.**  
 CONTINUE  
**WATCH OUT FOR TRAFFIC AND STAY SAFE!**  
 CONTINUE  
**TIME TO START GATHERING THE FACTS.**  
 CONTINUE  
**WHAT IS YOUR FIRST NAME?**  
 Jimmy  
**WHAT IS YOUR LAST NAME?**  
 [REDACTED]

**TAKE MULTIPLE PHOTOS OF THE SCENE WHILE IT IS FRESH! USE THE CAMERA ICON BELOW.**



Use the camera icon directly from the platform – the pictures are pulled directly into the report.

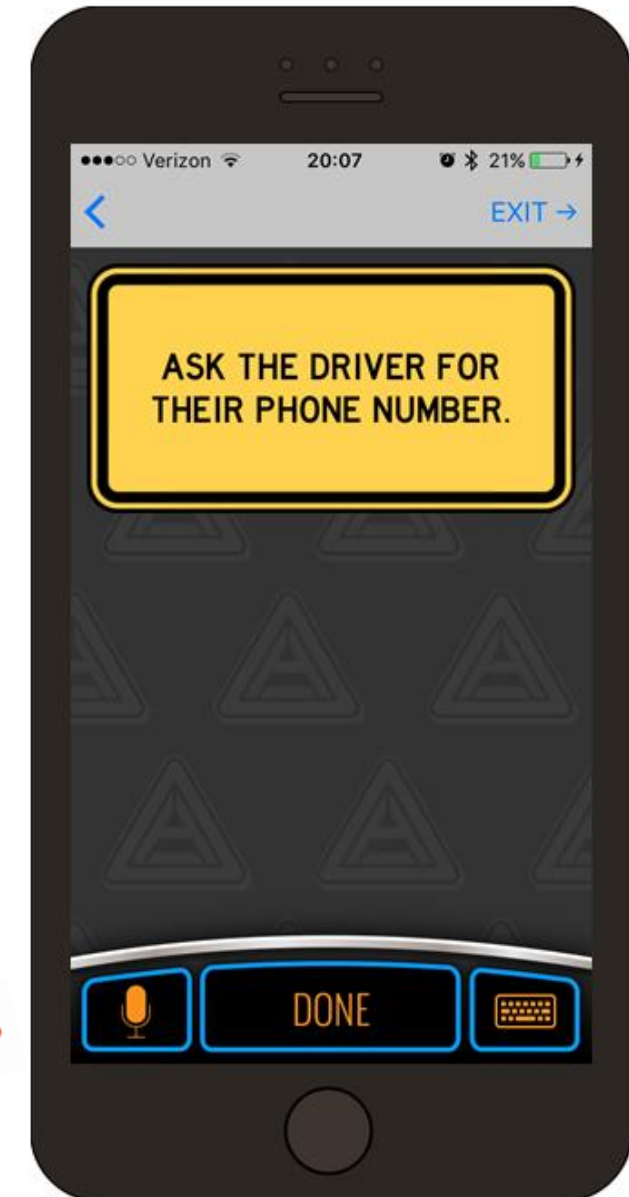






[Download 10cbf3f1-d45e-0ceb-df79-a259a580fced.png](#)

- **WHAT TYPE OF VEHICLE IS THIS?**  
Passenger Car
- **WHAT COLOR IS THIS VEHICLE?**  
BLACK
- **WHAT DIRECTION WAS THIS VEHICLE TRAVELING AT THE TIME OF THE CRASH?**  
WEST BOUND
- **HOW WAS THIS VEHICLE MOVING AT THE TIME OF THE CRASH?**  
Out of Control
- **HOW WAS THIS VEHICLE MOVING AT THE TIME OF THE CRASH?**  
Out of Control
- **DID THIS VEHICLE HAVE A DRIVER?**  
Yes
- **IS THIS DRIVER INJURED?**  
No
- **ASK THE DRIVER FOR PERMISSION TO PHOTOGRAPH THEIR LICENSE.**  
There were no images submitted
- **ASK THE DRIVER FOR THEIR PHONE NUMBER.**  
3236.5000.1
- **ASK THE DRIVER FOR PROOF OF INSURANCE AND TAKE A PHOTO OF THE ID CARD.**



Tap the keyboard to enter data and the microphone to record statements.



Use the platform without worry. If you forgot to take a certain picture and are in another section, just take the picture. As long as you get it.

If you complete the report and forgot something, just open a new report and grab the missing information.

The important thing is to get the information while still at the scene.



# 6 Phases of a Crash Protocol

- 1. Primary Assessment
- 2. Secure The Scene
- 3. Conduct Reminder
- 4. Gather Information
- 5. Review and Wrap Up
- 6. Possible Investigation



# Primary Assessment

- Do not assume anything.
- Ask other parties about possible injuries.
- When in doubt, call 911.
- GET THE FIRST RESPONDERS MOVING RIGHT AWAY!
- What if there is no signal? Send someone for help.



You might be scared out of your wits, and that's OK. Stay focused on the job, follow the protocol and you will be all right.





# Secure The Scene

## Use Your Judgement and Common Sense!

- Assist others to the best of your ability.
- Do not move the injured - unless in imminent danger.

As long as you are acting in good faith and to the best of your ability, you should be protected under Good Samaritan Law when you are helping others.



# Secure The Scene

## Turn Your Engine Off! Why?

- It's a Fire Hazard
- Preserves the ECM "Black Box" Data



# Secure The Scene

- Flashers On
- PARKING BRAKE!



# Secure The Scene

Please Wear Your Safety Vest.

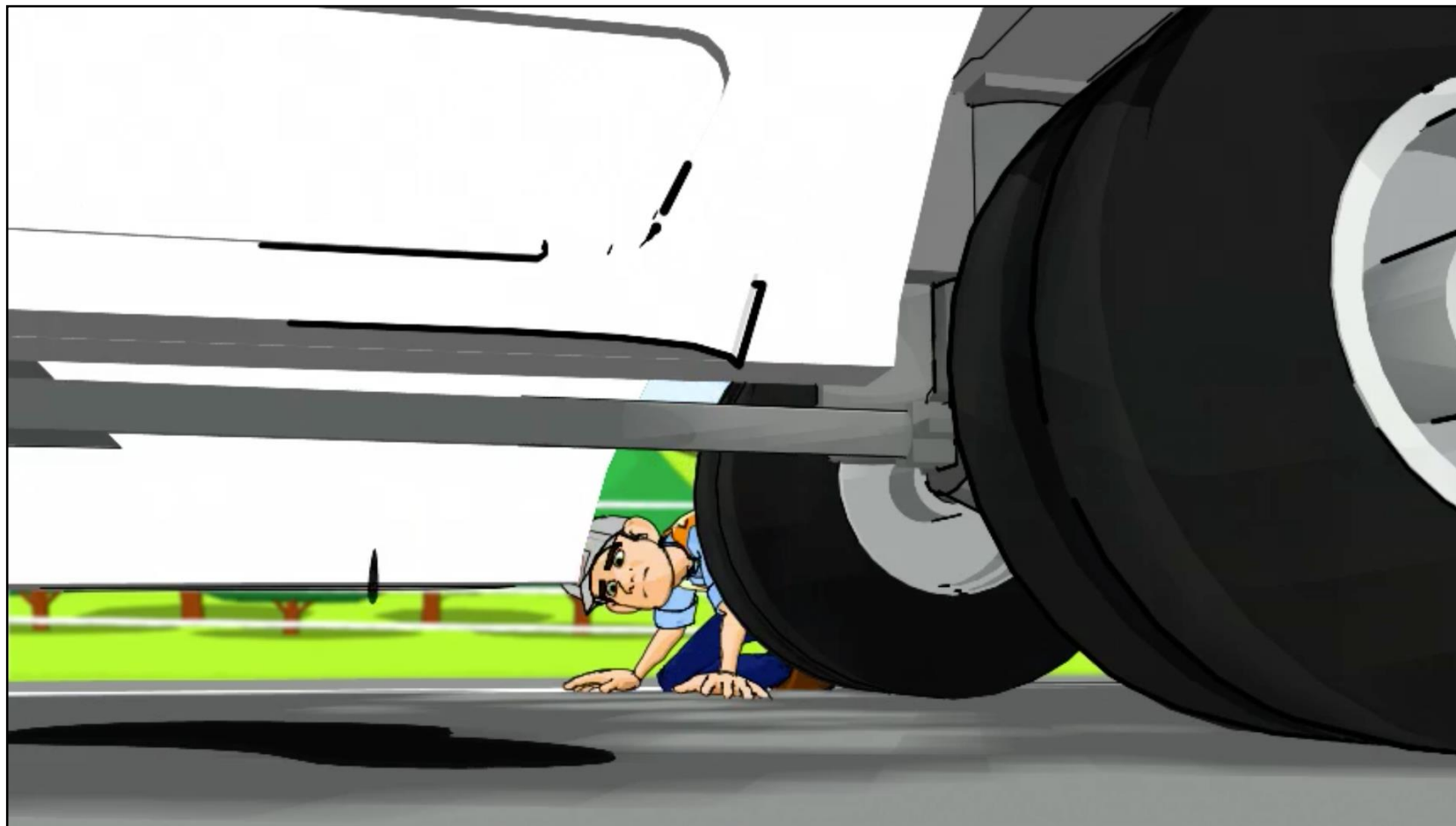
You don't want to become the next crash victim.





# Secure The Scene

Check For Hazards - Fuel spills, Electrical lines, Hazardous debris



# Fight The Fire



But the minute it gets too hot, get the heck out of the way!



# Secure The Scene

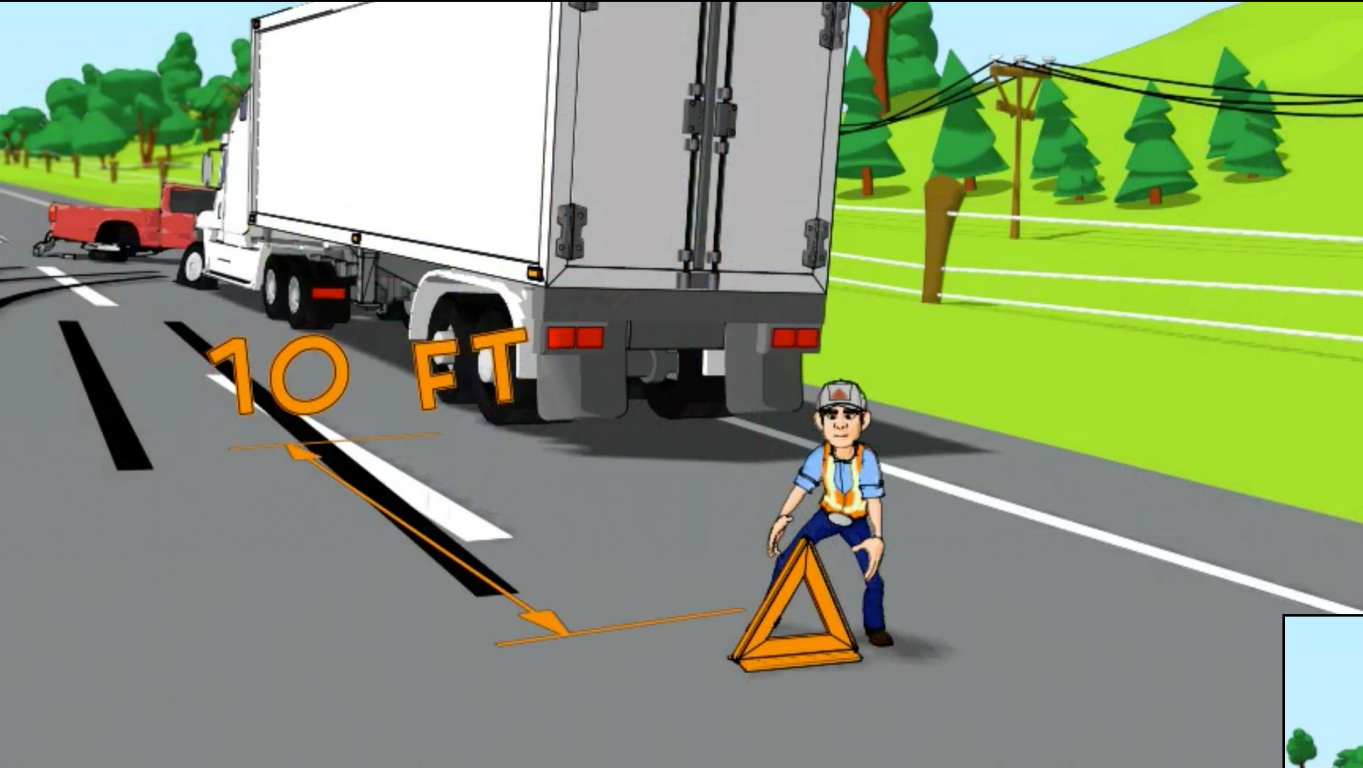
Triangles Out – It's the Law

(49cfr 392.8) (393.95)

Documenting that it's done protects  
you from secondary claims.

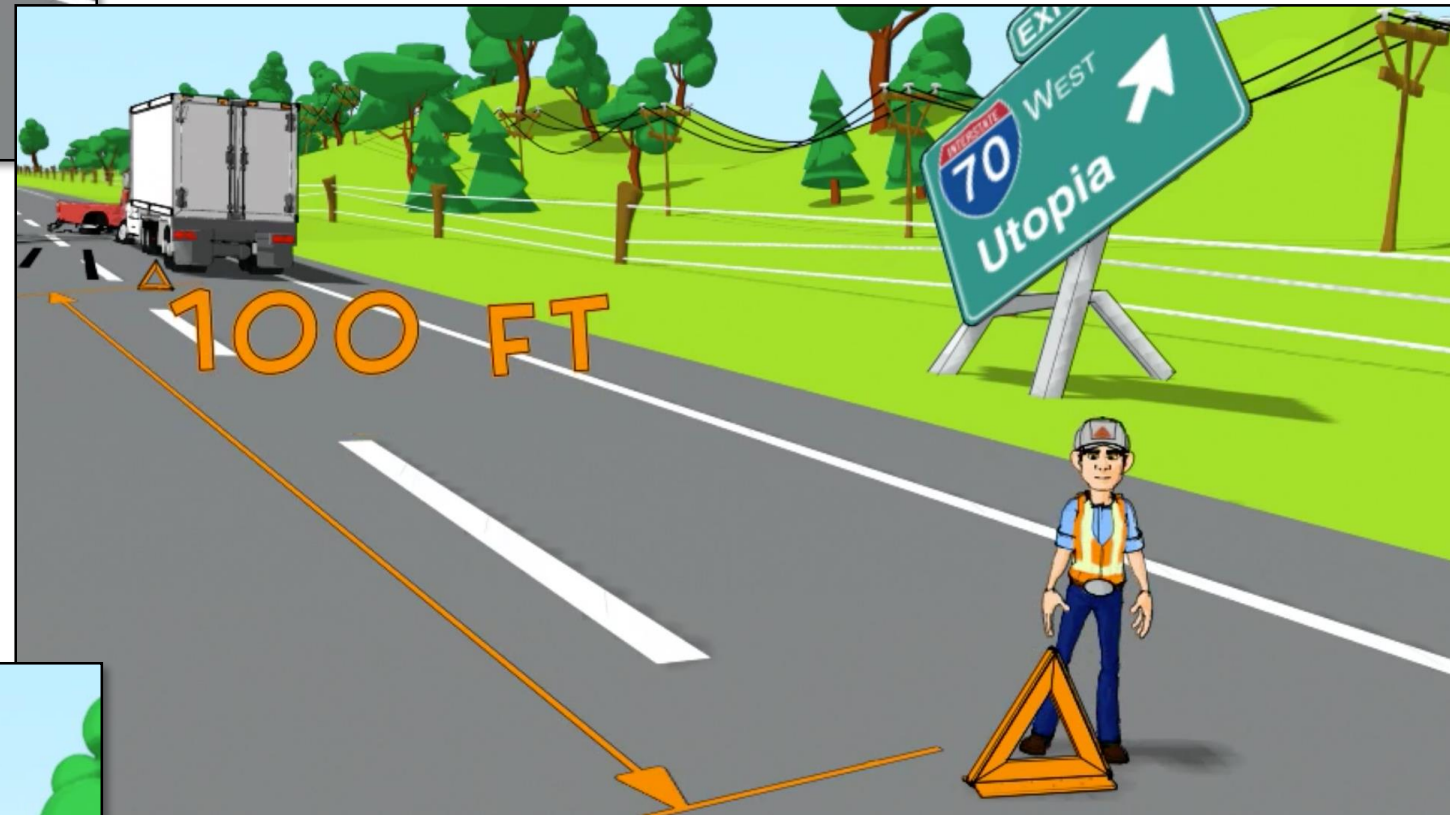






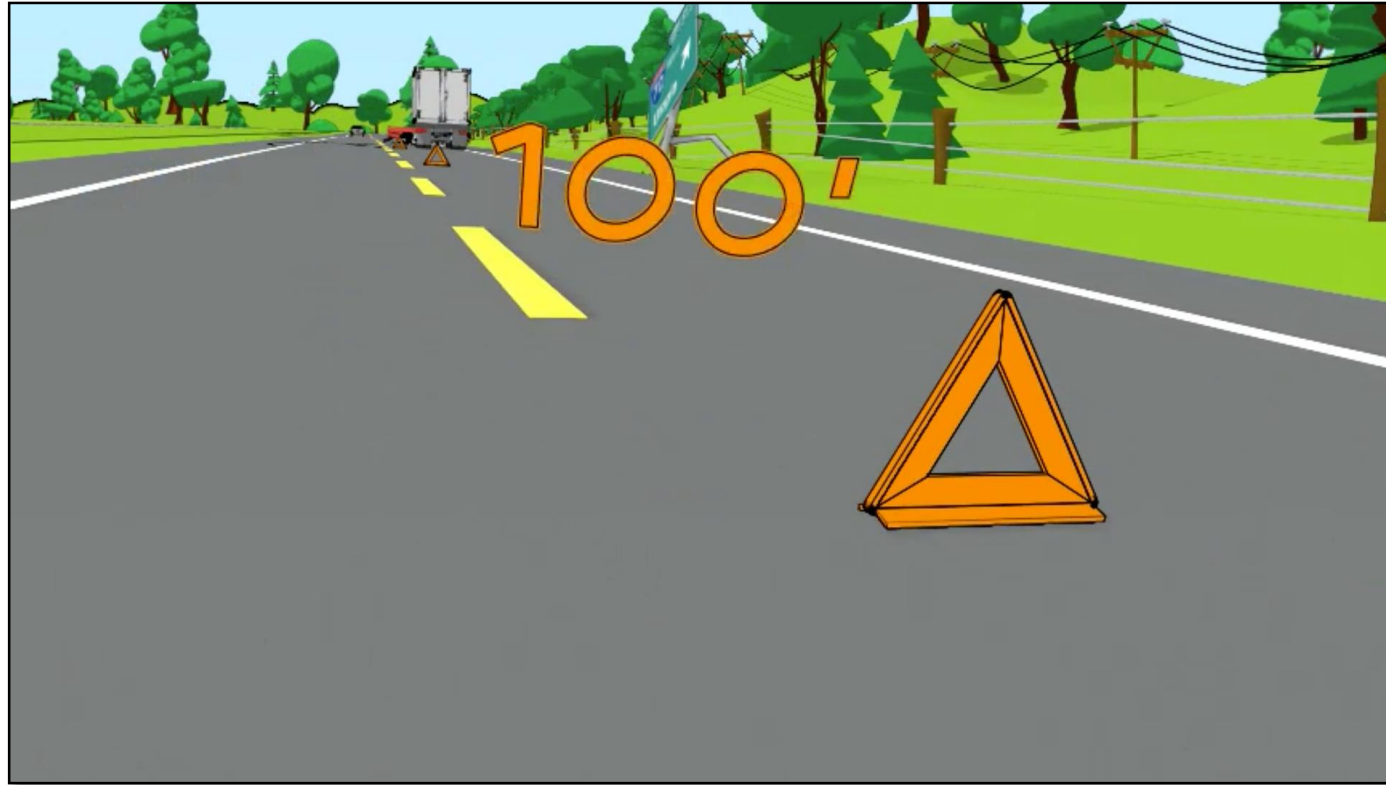
Most of us walk about three feet for every step, so just take about three and a half steps.

How about the second one? About 100 feet further back down the road. That's about 30 or 35 steps.



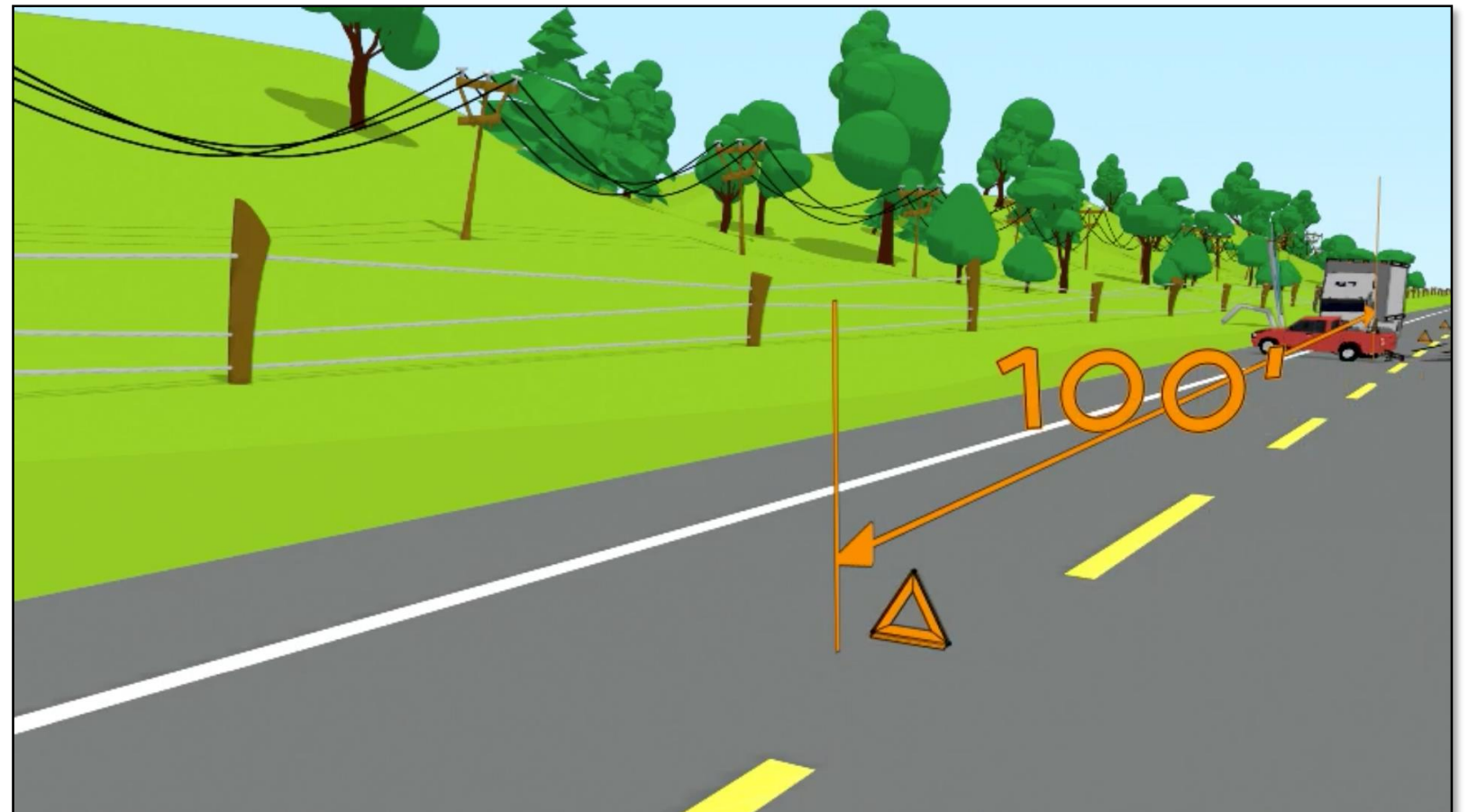
And don't get yourself run over. Hold the triangle out where other motorists can see it.





If you are on an interstate and there is no on-coming traffic to worry about, walk another 30 steps or so and place the third triangle.

If you are on a two lane, the third one goes down the road about 100' in the other direction from the crash. Use your common sense.



# Conduct Reminder



AccidentPlan helps during this stressful period with conduct reminders.

# Conduct Reminder



KEEP YOUR COOL





# Conduct Reminder



Don't say any more than you have to.



# Conduct Reminder



This is NOT the time to think about fault. None of us are qualified investigators. Gathering the evidence is the priority.

# Conduct Reminder



Cooperate with police. But choose words carefully.  
Never admit fault or say you are sorry.



# Conduct Reminder



Don't let anyone try to settle at the scene for cash.  
It's a really bad idea

# Conduct Reminder



Don't talk to the media.



# Conduct Reminder



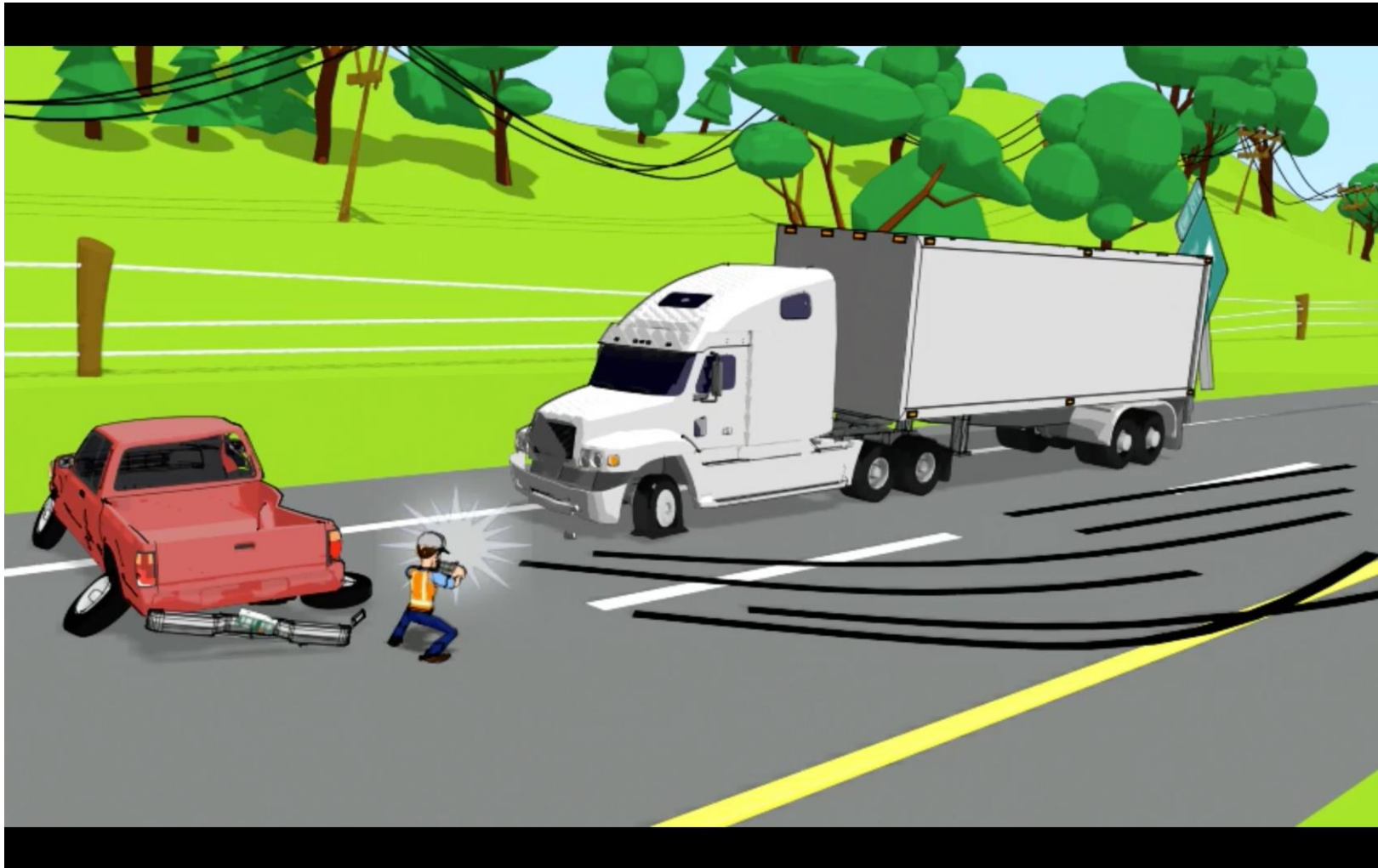
The crash might be your fault. But it might not.

Right now it doesn't matter.

You are protected by the constitution against self-incrimination.

Exercise your rights.

# Gather Information



Start taking photos right away.

- Wide shots of the scene.
- Skid marks
- Pieces of debris like broken glass and car parts - before they get swept up.

Emergency personnel will come traipsing through and the evidence can get rearranged very quickly.

Pictures tell the story.

# Take Multiple Photos of the Scene.



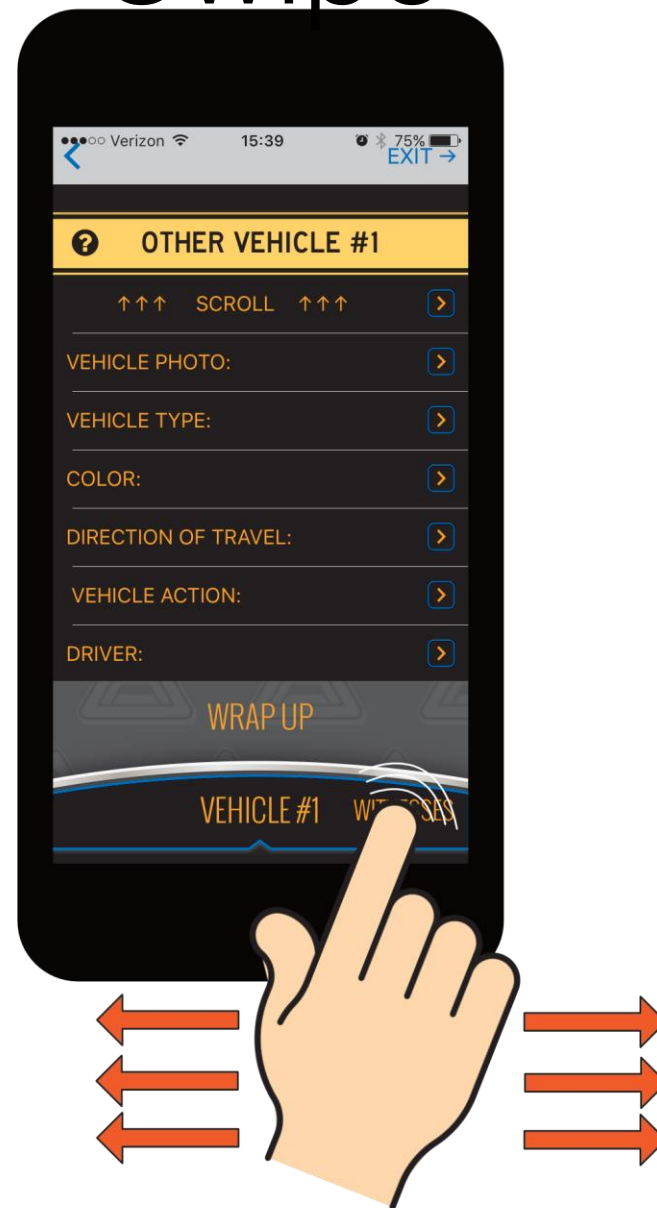
There are several opportunities to take pictures using the platform.

# Three Gestures

## Scroll



## Swipe



## Tap



When you get to this point the information is no longer coming at you in a linear fashion. The interface has made a change and we don't want to confuse you.

So make sure you are scrolling completely through the lists and swiping and tapping to navigate to each page.



# Gather Information

Verizon LTE 8:49 AM 83%

< EXIT >

**WITNESSES**

LICENSE PLATE: >

WITNESS ID: >

WITNESS STATEMENT: >

WITNESS PHONE NUMBER: >

SPECIAL INFORMATION: >

WRAP UP

VEHICLE #1 WITNESSES OFFICER

VZW Wi-Fi 09:49 100%

< EXIT >

PHOTOGRAPH ALL  
LICENSE PLATES.

camera DONE camera

VZW Wi-Fi 09:56 99%

< EXIT >

INCLUDING YOUR OWN,  
HOW MANY VEHICLES  
ARE INVOLVED?

1

2 ✓

3

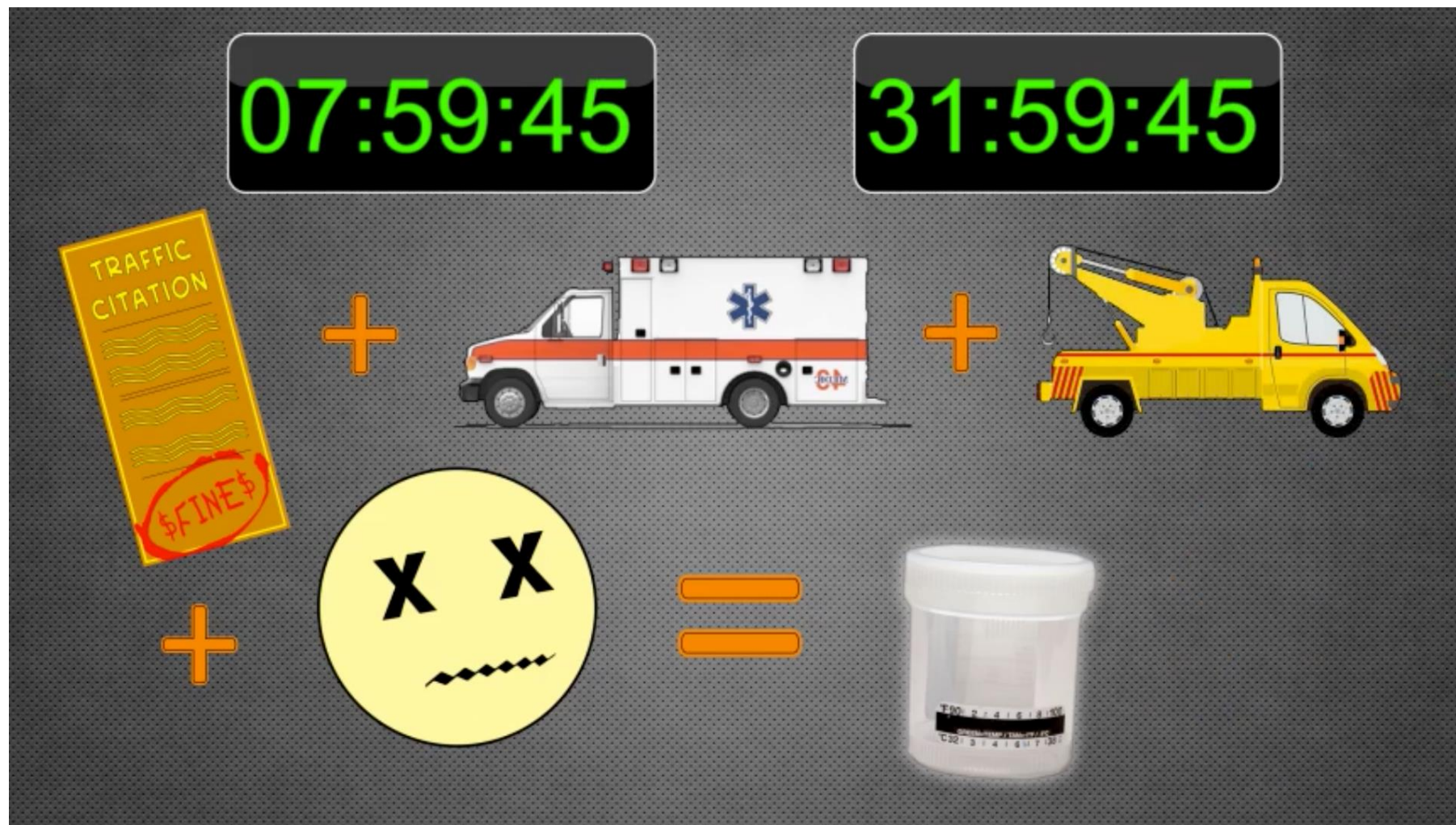
4

MORE THAN 4

SELECT

We have made it as easy as possible to gather information just by tapping to answer questions, taking photographs and asking for statements.

# Review CFR 382.303

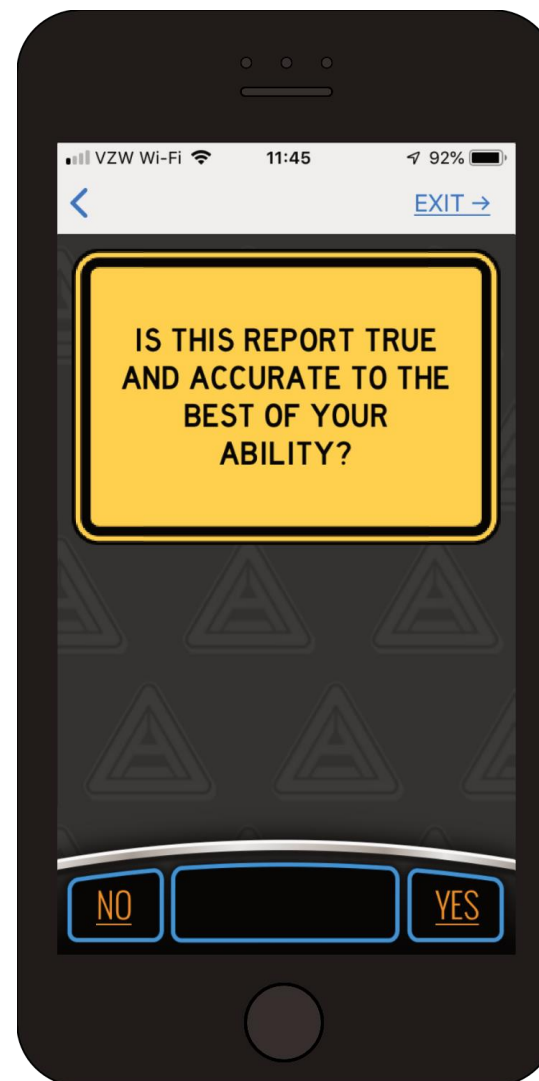
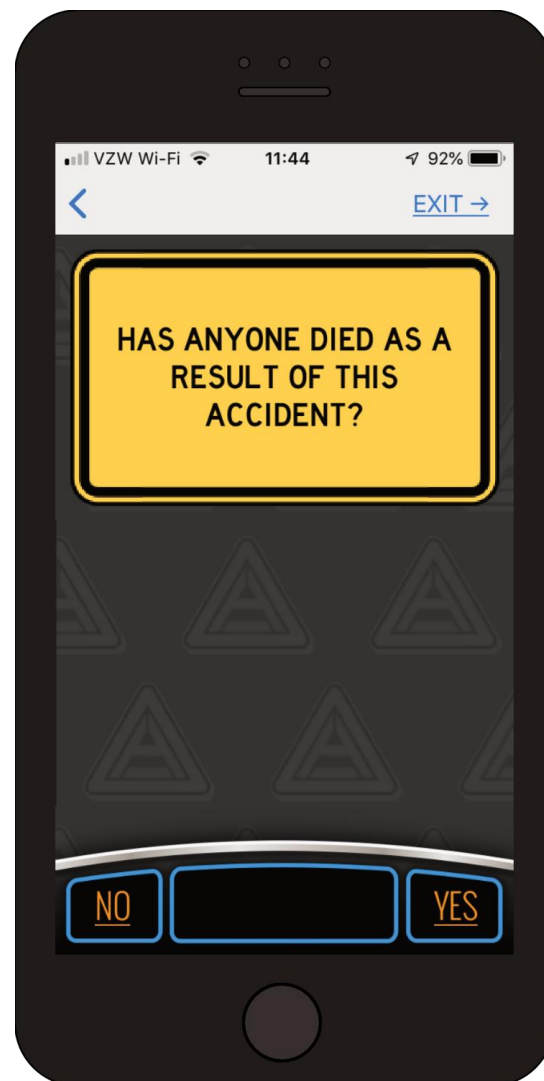


Logic is applied to determine if a drug and alcohol test is required.

8 Hours for alcohol and 32 hours for drug.

- Fatality = D&A Test
- Citation + Ambulance = D&A Test
- Citation + Tow = D&A Test
- No fatality and no citation? No test.

# Review and Wrap Up



You can go back and gather more information, or you can sign and submit the report.



# Possible Investigation



Some crashes will come under investigation.

Evidence you gather from the scene is crucial. Please, document everything!





QUESTIONS?



**AccidentPlan**<sup>TM</sup>  
You're Road Ready

1-833-831-5288

[www.accidentplan.com](http://www.accidentplan.com)